



OLD CATARACT

ASWAN • 1899



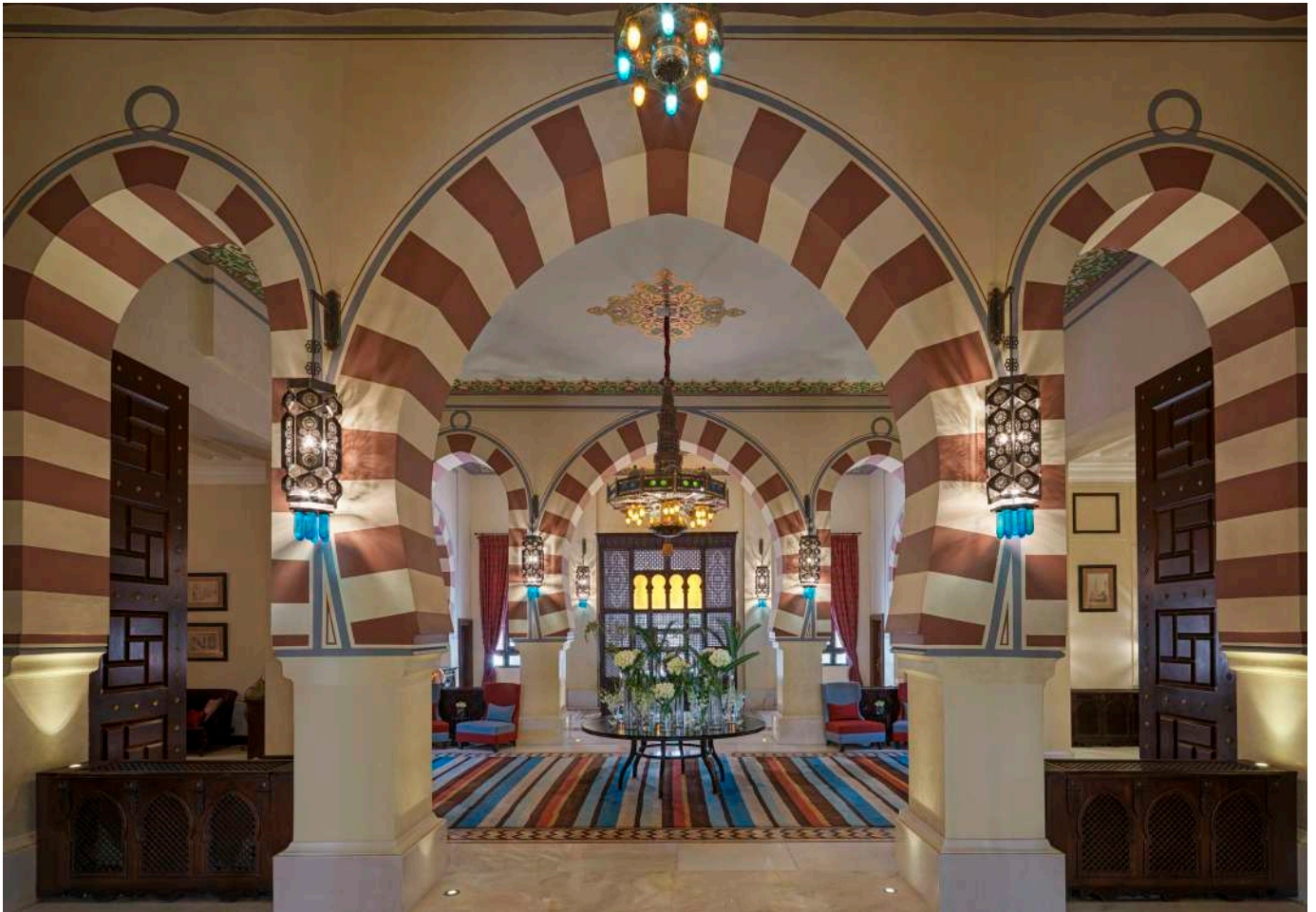
HOTEL FACTSHEET

OLD CATARACT

Perched on a pink granite cliff above the Nile, Old Cataract Aswan is a historic palace defined by a quiet, enduring grandeur, shaped as much by landscape as by legacy. Set within the Nubian Desert and overlooking Elephantine Island, the hotel brings together Victorian architecture and contemporary comfort in a setting of rare composure.

Its collection of rooms and suites, along with a considered selection of dining experiences, unfolds against expansive river views, creating a seamless sense of place. From here, Aswan's most storied landmarks, including the Temple of Philae and the Unfinished Obelisk, lie within easy reach, allowing each stay to remain closely connected to the cultural depth of Upper Egypt.





ADDRESS:

Abtal El Tahrir Street, Sheyakhah Oula, Aswan 1, 81511, Egypt

WEBSITE:

mandarinoriental.com/aswan

OPENING DATE:

Currently open and undergoing renovation

MANAGEMENT:

Mandarin Oriental

GENERAL MANAGER:

Etienne-Charles Gailliez

NUMBER OF KEYS:

The hotel has 138 rooms, with 35 currently available. It is composed of two buildings: the Palace Wing and the Nile Wing. A total of 41 rooms in the Palace Wing are currently undergoing renovation.

NUMBER OF FLOORS:

3





**SET ON THE BANKS OF THE NILE,
IN CLOSE PROXIMITY TO:**

PHILAE TEMPLE

The Temple of Isis at Philae, capturing the mystique of Egypt's past

ELEPHANTINE ISLAND

One of Egypt's most storied islands with the Aswan Museum and Temple of Khnum

ASWAN INTERNATIONAL AIRPORT

Offering ease of access to regional and international hubs

NUBIAN MUSEUM

10 minute walk to the museum of thousands of artefacts that showcase the history, art and culture of Nubia

ASWAN SOUKS

Vibrant and colourful markets offering an Authentic Nubian shopping experience

UNFINISHED OBELISK

The largest known ancient Obelisk offers a glimpse into Egyptian craftsmanship

TOMBS OF THE NOBLES

An ornate collection of over 400 burial places of Egypt's ancient elite

FOOD AND BEVERAGE

A CELEBRATION OF GLOBAL FLAVOURS

From Levantine and Mediterranean influences at Saraya to light bites and cocktails along The Promenade, each setting offers a distinct expression of the hotel's culinary offering. Thoughtfully composed menus, elegant interiors and terrace dining overlooking the Nile come together to create a seamless flow from breakfast through to sunset and evening moments.

3 Dining Venues

1 Pool Bar

AL SARAYA

Saraya presents a refined dining experience centred on Levantine and Mediterranean cuisine, where regional flavours are complemented by subtle international influences. From fresh Nile fish and regional specialities to a selection of meats, vegetarian dishes and light bites, the menu reflects both tradition and variety, offering a considered approach to all-day dining.



Set beneath Moorish arches and softly lit by copper lanterns, the restaurant features both indoor seating and a terrace overlooking the Nile. The design draws on the architectural heritage of the region, creating an elegant and inviting setting that evolves seamlessly from breakfast through to evening dining.



THE TERRACE

The Terrace offers an elegant, open-air dining experience located adjacent to Al Saraya, defined by its panoramic outlook across the water towards Elephantine Island. Blending a selection of Old Cataract's iconic historical dishes with Mediterranean brasserie cuisine, the menu also features a number of signature elements shared with Al Saraya, creating a seamless connection between the two dining experiences. From leisurely lunches to sunset drinks and evening dining, each moment unfolds in a setting shaped by timeless charm and the gentle rhythm of the Nile.



The space is designed to feel both refined and relaxed, with open-air seating and private cabanas creating an intimate atmosphere from day through to evening. Framed by uninterrupted Nile views and the hotel's storied surroundings, The Terrace offers a picturesque setting for both social gatherings and quieter occasions. The signature "Agatha Christie's Afternoon Tea" remains at the heart of the experience, capturing the nostalgic spirit and enduring heritage of Old Cataract.



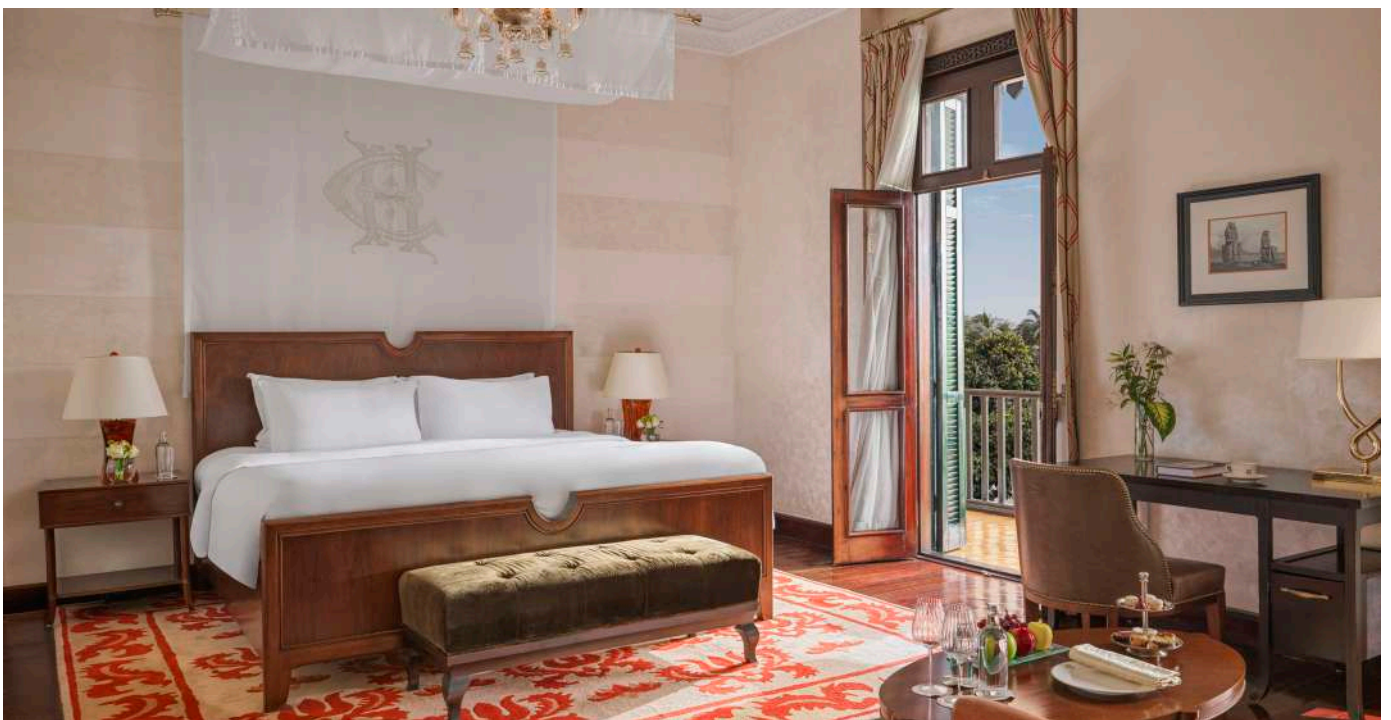
THE PROMENADE

Set beneath The Terrace, The Promenade unfolds along the Nile as a serene walkway defined by its sweeping river views and golden light at sunset. Widely regarded as one of Aswan's most photographed settings, the space is known for the reflections of the sun across the water, creating a quietly captivating atmosphere as day transitions into evening. From a leisurely Afternoon Tea to sunset drinks beside the Nile, The Promenade offers a refined setting to pause and take in the timeless beauty of Old Cataract's surroundings.



ROOMS AND SUITES

Set within the historic Palace Wing, Old Cataract, Aswan presents 35 rooms and suites, comprising 9 rooms and 26 suites, where Moorish design and Victorian touches come together in a setting shaped by heritage and place.



High ceilings, classical detailing and hand-crafted furnishings reflect the hotel's 1899 legacy, while natural light and considered layouts create an atmosphere of quiet comfort. Views extend across tropical gardens or the Nile, offering a distinctive connection to the surrounding landscape.



ROOMS AND SUITES

Marble bathrooms feature separate baths and walk-in showers, complemented by thoughtful in-room amenities and private balconies in select categories. The overall design balances historic character with contemporary ease, ensuring a refined and restful stay in the heart of Aswan.



A range of suites, from spacious junior configurations to expansive signature residences, offer elevated comfort and a more residential experience. Separate living areas, generous terraces and panoramic Nile views define the upper categories, while signature suites such as the Sir Winston Churchill and Agatha Christie Suites bring a deeper sense of history, with grand proportions, dedicated living and dining spaces, and a setting shaped by the hotel's storied past.

Each space is individually composed, offering a seamless blend of heritage, craftsmanship and understated elegance in one of Aswan's most iconic addresses.

