



MANDARIN ORIENTAL
HYDE PARK
LONDON





Sitting between historic Royal Parkland and the buzz of fashionable Knightsbridge, Mandarin Oriental Hyde Park, London is one of the world's most luxurious hotels. It offers guests exceptional British experiences delivered with contemporary flair and impeccable, genuine and gracious service.

Taking inspiration from Mandarin Oriental Hyde Park, London's ideal location and new look, Jenny Packham was commissioned to create the hotel's signature fan.





Internationally renowned designer, Joyce Wang, has overseen the redesign of the rooms, suites and public areas, taking inspiration from the hotel's royal heritage and peaceful parkside location, as well as the glamour of the early 20th century's Golden Age of travel.





Light and contemporary, our guest rooms and suites are uniquely designed and individual in layout, overlooking tranquil Hyde Park, vibrant Knightsbridge or the beautiful inner courtyard.



Reflecting the hotel's peaceful parkside location, each room and suite is decorated with carefully curated artworks and custom-designed furniture, creating a warm and inviting environment.





Bespoke Fromental wallpaper, horsehair light sconces, gloss painted patterns that reference the carriage paths through Hyde Park, striking gold and crackled glass custom-made acorn chandeliers and Volakas marble bathrooms are also part of the new design. Many rooms and suites feature private terraces and balconies.





Two entirely new, stunning and interconnected Penthouse Suites offer unobstructed views of Hyde Park. They feature large bedrooms with luxurious upholstery and exotic marble table-tops leading into incredible master bathrooms. The Penthouse Suites enjoy private terraces extending from the bedrooms to the living areas.





Dinner by Heston Blumenthal, the two-Michelin-starred, award-winning restaurant, offers simple modern dishes inspired by British historic gastronomy.



Together with Executive Chef Ashley Palmer-Watts, Heston Blumenthal has put together a menu celebrating British culinary history with dishes paying homage to recipes dating from the 14th century.





Bar Boulud, London offers a truly special dining experience. A stylish bistro and wine bar specialising in seasonal, rustic French cooking, Bar Boulud's relaxed ambience and fabulous cuisine has won plaudits from critics and diners alike.





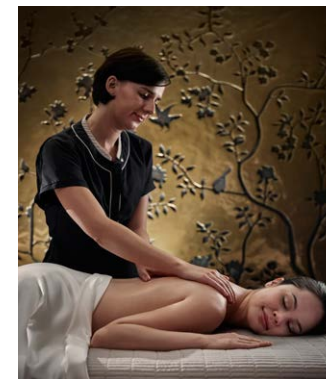
The chic surroundings of The Rosebery provide the perfect backdrop for all-day dining, afternoon tea and champagne cocktails, whilst the contemporary design and buzzing atmosphere of Mandarin Bar is ideal for leisurely daytime meetings, pre-dinner aperitifs and post-dinner drinks.



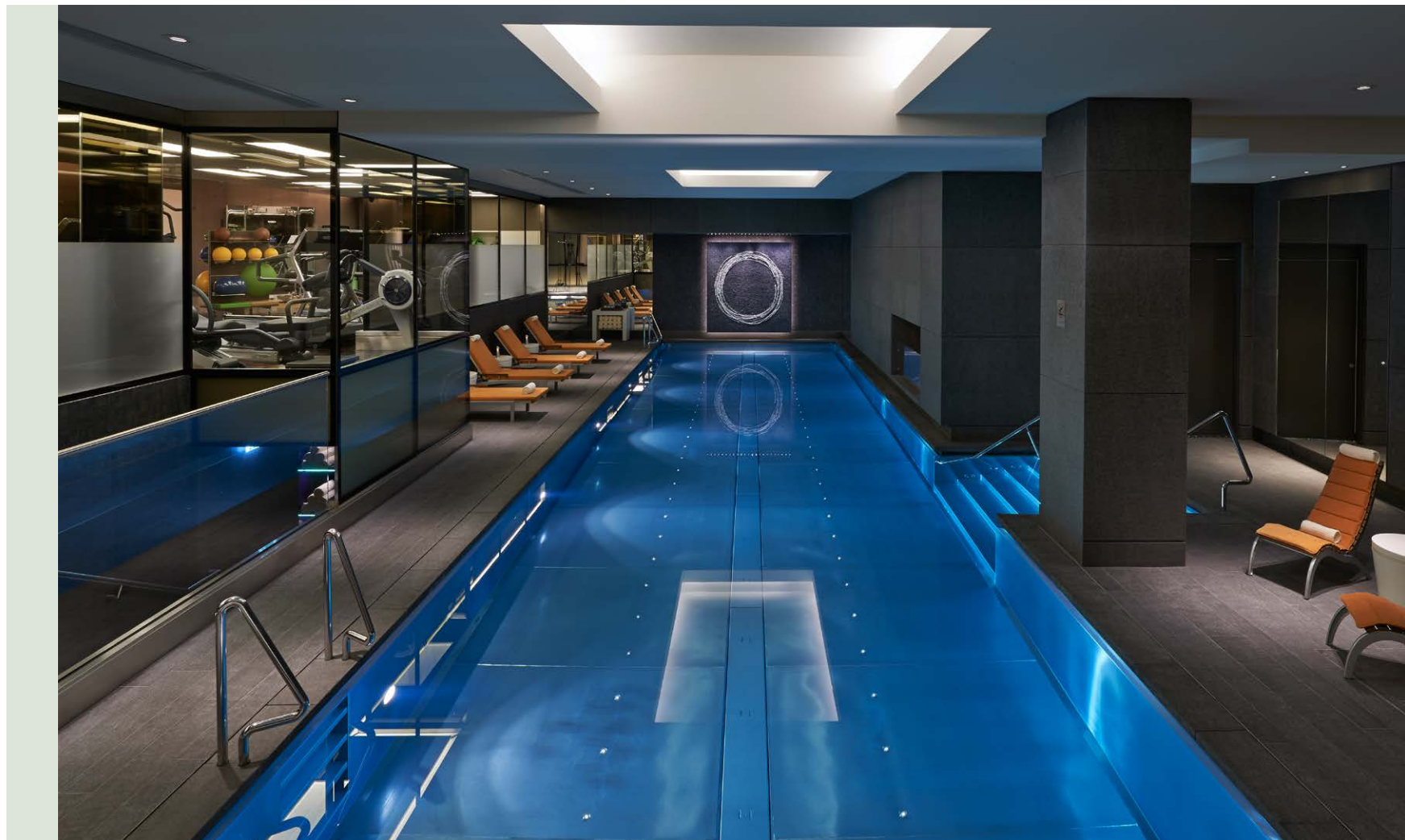
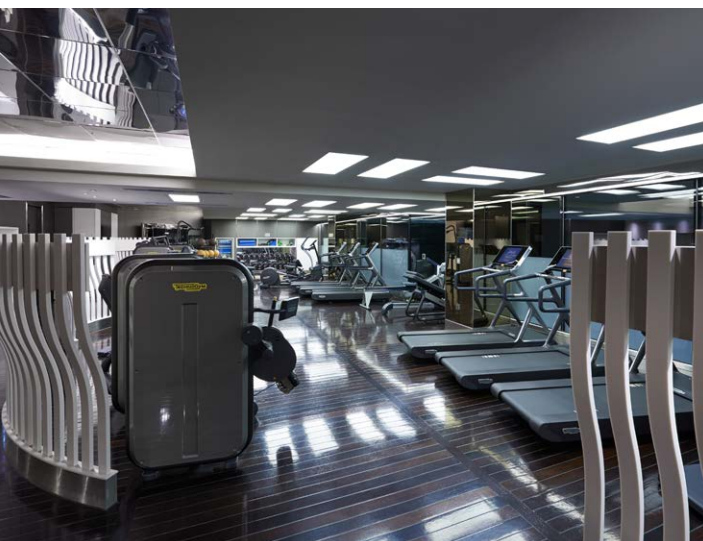




The Spa at Mandarin Oriental, London is a haven of tranquillity, promoting an aura of relaxation, mindfulness and life balance. The Spa treatment menu is extensive and there are 13 beautiful treatment rooms as well as a spacious Oriental Suite with two massage beds and a Rasul water temple.



Our Fitness and wellbeing centre has been tailored to the cosmopolitan, luxury traveller and boasts state-of-the-art Technogym™ equipment, a 17-metre indoor stainless steel swimming pool and a PilatesPT studio with award-winning trainer Hollie Grant.



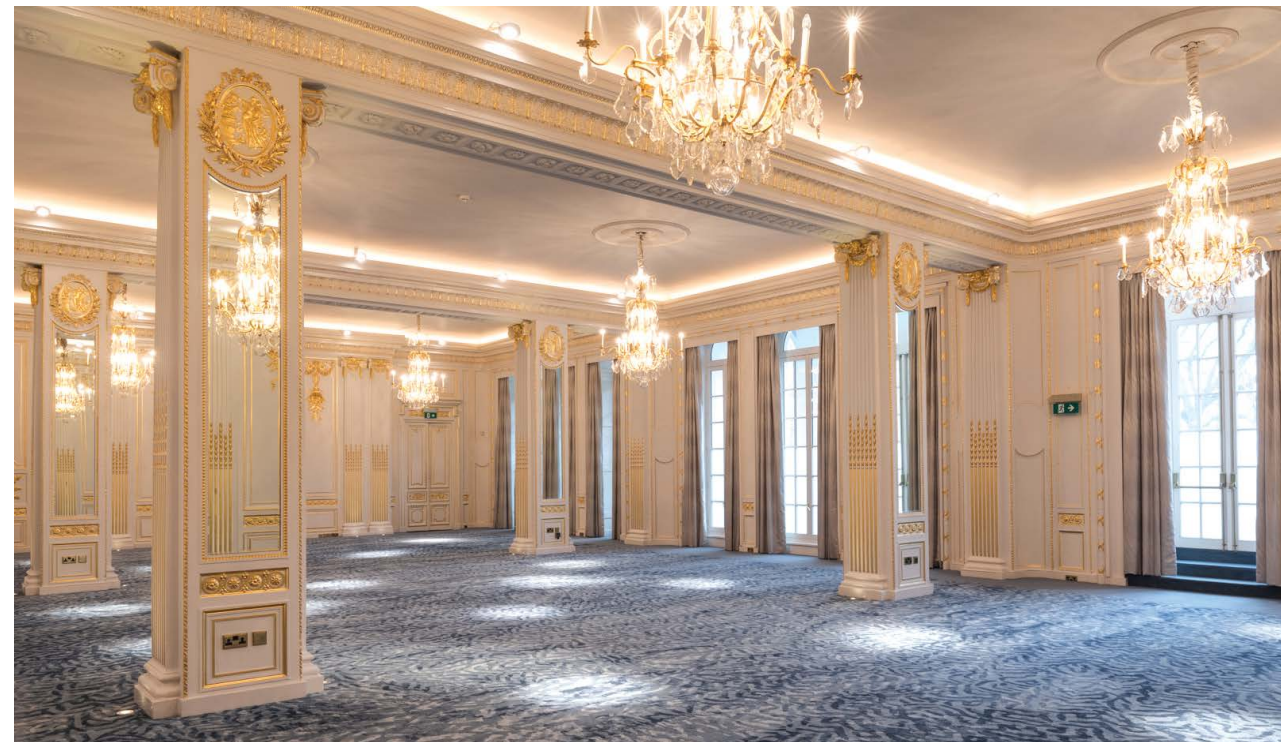


Our Ballroom has played host to some of society's grandest weddings and events as well as smaller and more intimate affairs. Featuring a private entrance onto Knightsbridge, the Ballroom also enjoys an exclusive Royal Entrance onto Hyde Park and a unique outdoor terrace.





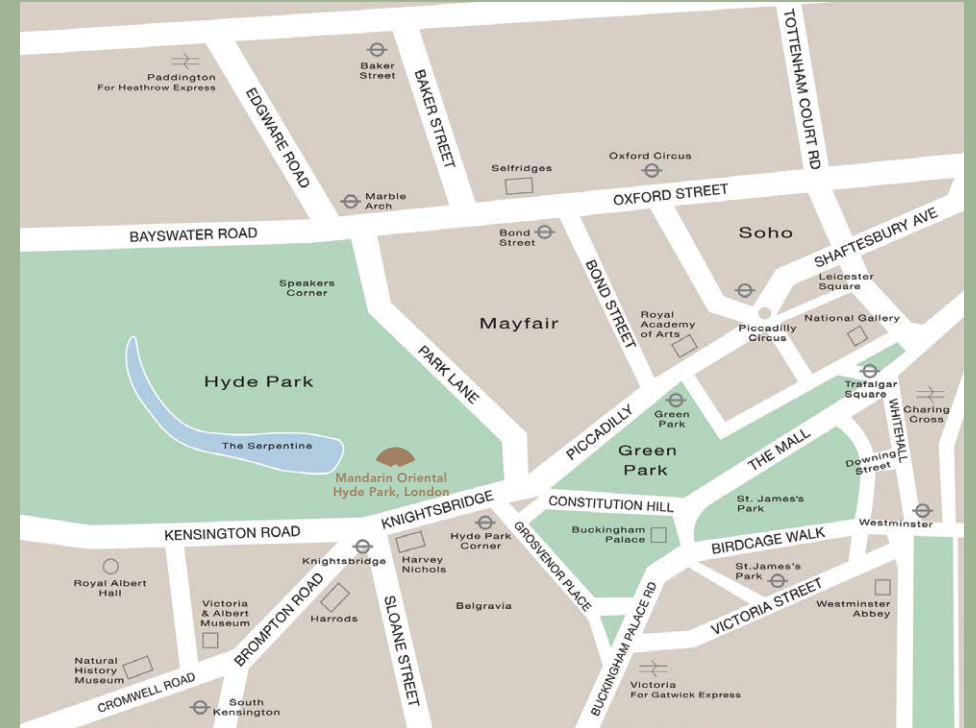
We offer a selection of beautiful events rooms, all opulently decorated and fitted with the latest technology.





Mandarin Oriental Hyde Park, London is within easy reach of all the sights, situated in a prime position in the heart of the capital.

Enjoying a peaceful setting next to the city's most famous Royal Park, our luxurious accommodation and facilities make us the perfect London base/address/destination.







MANDARIN ORIENTAL

HYDE PARK

LONDON

MANDARIN ORIENTAL HYDE PARK, LONDON

66 Knightsbridge, London, SW1X 7LA, United Kingdom

Telephone +44 (0) 20 7235 2000

mandarinoriental.com/london